



symbolic image

**UK Technical Data 01**  
**DHS 2\*\*\* 230V AC and DHS 4\*\*\* 400V AC**  
**Main switches**  
**Rated for Utilization Category AC22a**



symbolic image



**Function**

Isolation and switching of the main supply as per BS 7671 - 462

The series DHS available in 2 and 4 pole versions, ratings <125A AC22a for use in AC circuits.

**Features**

High short-circuit resistance and high switching capacity, double-sided two-tier terminals for large conductor cross-section and busbars, switch position indicator, viewing window for labels.

**Mounting**

Quick fastening to mounting rail, any installation position

**Applications**

Suitable for use in main distribution boards for domestic and commercial installations

**Notes**

Suitable for switchboard isolation of general distribution loads as per EN 60947 - 3 Utilization Category AC22a.

**Accessories**

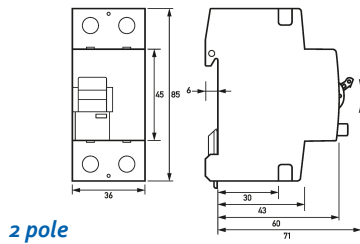
Clamp covers KA, Auxiliary Switches DHi, Software DBS

**Technical Data**

Technical Data	DHS 2-*** & DHS 4-***
Series	DHS 2 and DHS 4
Handling	Complete device in housing
	Load circuit
Specification	Load switch contact
Number of poles (total)	2 or 4
Rated voltage (AC)	2 Pole 230 V (207 V ... 253 V) or 4 Pole 400 V (360 V ... 440 V)
Rated current (AC)	Refer to the individual product reference, data sheet available on request
Rated short-circuit current	10 kA
max. total rated switching capacity	10 kA
Rated insulation voltage	400 V

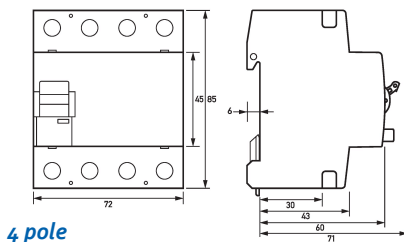
Technical Data	DHS 2-*** & DHS 4-***
Rated impulse withstand voltage	4 kV
Rated frequency	50 Hz, 60 Hz
Allowed utilization category	AC-22a
thermal Backup-fuse OCPD	Refer to the individual product reference, data sheet available on request
short-circuit backup-fuse SCPD	125 A
Back-up fuse type	gG
	Screw-type terminal top, bottom (Load circuit)
Neutral conductor position	left
Connection C1 Maximum number of conductors per terminal	2
Cross section solid	1-wire: 1.5 mm <sup>2</sup> ... 50 mm <sup>2</sup> ; 2-wire: 1.5 mm <sup>2</sup> ... 16 mm <sup>2</sup>
Connecting capacity flexible	1-wire: 1.5 mm <sup>2</sup> ... 35 mm <sup>2</sup> ; 2-wire: 1.5 mm <sup>2</sup> ... 16 mm <sup>2</sup>
Cross section stranded	1-wire: 1.5 mm <sup>2</sup> ... 50 mm <sup>2</sup> ; 2-wire: 1.5 mm <sup>2</sup> ... 16 mm <sup>2</sup>
	General data
Ambient temperature	-25 °C ... 40 °C
Climate resistance	as per IEC 60068-2-30: damp/heat, cyclical (25°C/55°C; 93%/97% rel. humidity, 28 cycles)
Shock resistance	20 g / 20 ms Duration
Housing type	Distributor housing
Mounting type	Mounting rail (35 mm)
Protection class	IP20 (installed: IP40)
Width	2P = 36 mm 4P = 72 mm
Height	85 mm
Depth	75 mm
Installation depth	69 mm
Width (modules)	2 or 4
Design requirements/Standards	IEC 60068-2-30, EN 60947-3

**Dimensions**



2 pole

**Wiring example**



4 pole

